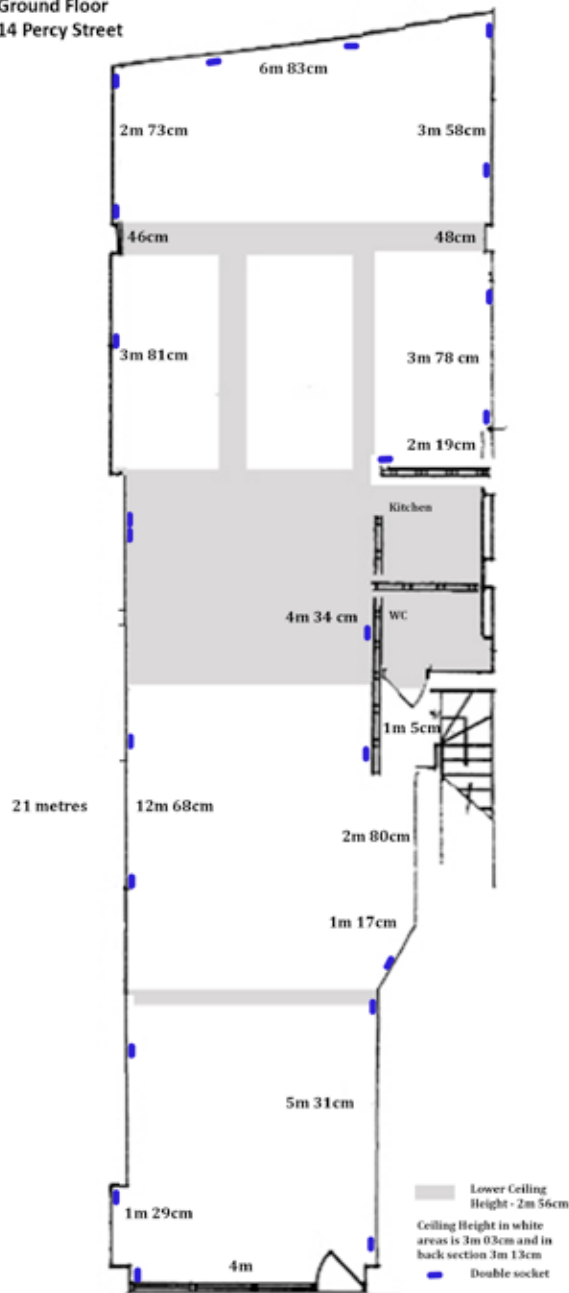


# DIFFERENT

## Floor Plans and Space

Ground Floor  
14 Percy Street

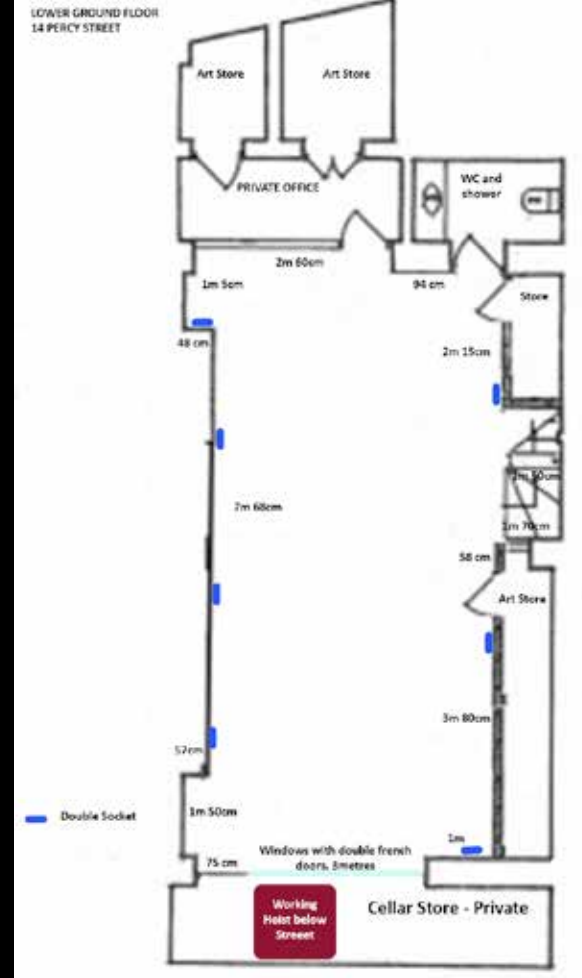


### Ground Level - to the left

The ground floor gallery has 1200 square feet and approximately 45 metre of useable wall space plus a 4 metre window at street level and skylight to the rear. It has a natural pine wooden floor with gas fired under floor heating, there is also a toilet and kitchen with sink and drainer. Ceiling height at the lowest point is 2meters 56 cm and at its highest point is 3 meters 13cm.

### Basement Level - to the right

The lower gallery provides a further 800 square feet of exhibition space and 20 metres of useable wall space. It has a cloakroom cupboard and additional toilet with shower. Double glazed doors in the lower gallery allow in natural light and access to a working hoist from the pavement above. On this level there are gas-fired radiators, painted resin floor.



# DIFFERENT

14 Percy Street · Fitzrovia · London · W1T 1DR

Tel +44 (0)207 637 3775

Mail [info@gallerydifferent.co.uk](mailto:info@gallerydifferent.co.uk)

Web [www.gallerydifferent.co.uk](http://www.gallerydifferent.co.uk)